

# Alto Bench

---

AGILE WORKING

**ELITE OFFICE FURNITURE UK LIMITED**

Goole Office, Showroom & Factory

Elite Road  
Goole  
East Yorkshire  
DN14 8BF  
United Kingdom

Tel. +44 (0)1405 746000

Email. [sales@elite-furniture.co.uk](mailto:sales@elite-furniture.co.uk)  
[www.elite-furniture.co.uk](http://www.elite-furniture.co.uk)

**London Office & Showroom**

81-87 St John Street  
Clerkenwell  
London  
EC1M 4NQ  
United Kingdom

Tel. +44 (0)20 7490 4909

Email. [londonshowroom@elite-furniture.co.uk](mailto:londonshowroom@elite-furniture.co.uk)





The aesthetic of the bench can be enhanced with the application of 12 optional metalwork finishes to the frame.

The use of Raw Metalwork gives the surface a texture suitable for urban environments.



An upholstered return screen has been developed for use with Alto Bench, allowing worktops to be segregated when configured for tasks that require an element of privacy.

These flexible push fit screens can be installed and relocated easily.



**Inca** provides users of communal working areas and meeting rooms with instant access to desktop AC power and USB charging ports.



**Pluto** satisfies the growing need for easily accessible AC power sockets and USB charging in informal areas.



Today's agile working environment aims to offer employees flexibility, supporting collaborative working.

Alto Bench is available on castors, enabling reconfigurable configurations.





Suitable for touchdown spaces, Alto Bench is offered at a height of 740mm with or without castors. This height is increased to 747mm when specified with a Solid Oak top.

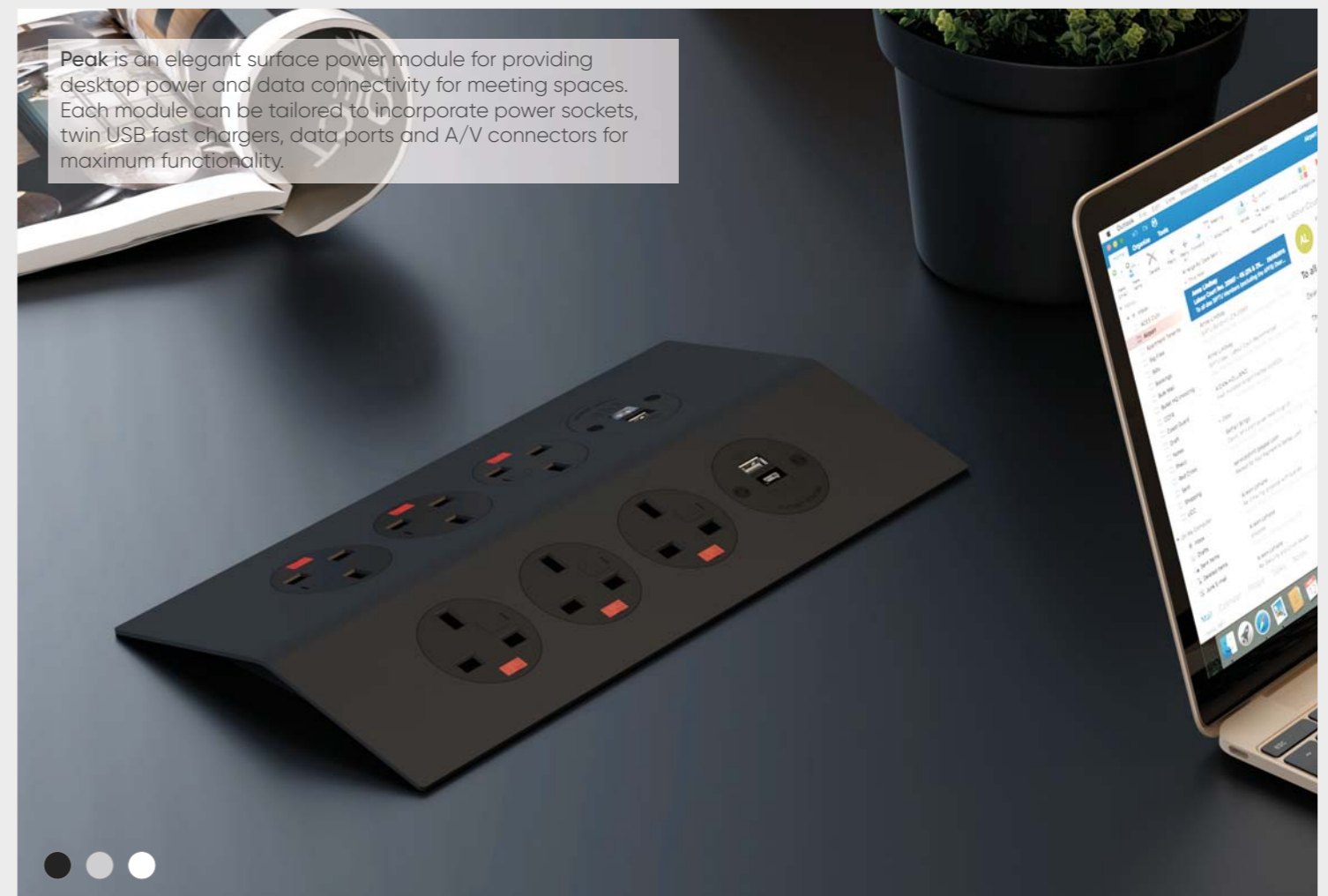








Prime is the compact solution for integrated and easily accessible power supply. Prime offers the option of exposed power access or power concealed behind a folding hood, offering dust protection.

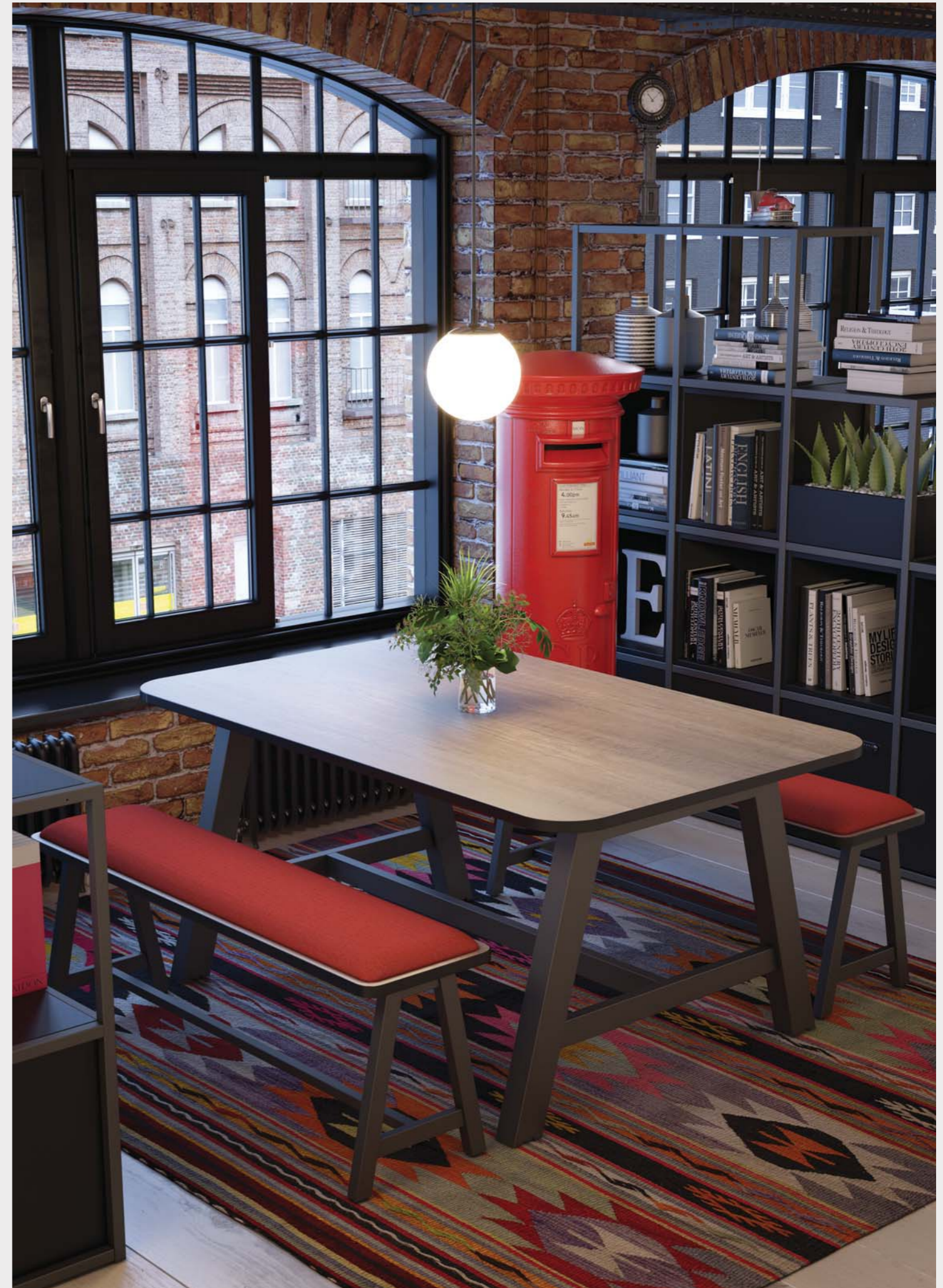


Peak is an elegant surface power module for providing desktop power and data connectivity for meeting spaces. Each module can be tailored to incorporate power sockets, twin USB fast chargers, data ports and A/V connectors for maximum functionality.



People are meeting less conventionally, leading to informal work settings that facilitate informal but effective collaboration.

Alto Low Bench provides a surface that complements the surrounding environment delivering in-office meeting areas when partnered with our Bench seating.





A number of optional accessories are available to offer wire management solutions that keep the surrounding area free from trailing cables, whilst routing electric power to the surface of the bench.

- 1. Horizontal Cable Tray.
- 2. Vertical Cable Riser.
- 3. Slinky Cable Riser.



## Return Screen.



### Return Screen.

- Straight dividing screens with rounded corners.
- Screen slides onto the top panel at desired position and can be moved at any time.
- Screens overhangs the front of the bench desktop by 143mm.
- Group 1-7 fabric band options.

ECSFR6/D

743w x 36d x 375h

Suitable for 1200mm wide Alto Bench  
(use 2x to create back to back partition)



ECSFR5/D

643w x 36d x 375h

Suitable for 1000mm wide Alto Bench  
(use 2x to create back to back partition)



## Fabric Choices.

The look and feel of our Alto Bench range can be transformed into a unique piece of furniture by applying different materials, tones and textures to the surrounding seating and screen solutions.

We align ourselves with the leading fabric manufacturers with more than 150 core ranges including Camira, Panaz, Kvadrat and Svensson, incorporating their most responsible ranges with Oeko-Tex® Standard 100, Indoor Advantage™ Gold, EU Ecolabel and Cradle to Cradle™ certifications.



## Alto High Bench.



### Alto High Bench Without Castors.

- 25mm MFC, Nanotech and veneer top panels and 32mm solid oak top panels.
- Heavy duty 'A' frame legs with cross bracing frame.
- Alto Bench with MFC, Nanotech and veneer top panels are supplied 1050mm high with radiused corners.
- Alto Bench with solid oak top panels are supplied 1057mm high with 90° corners.

AB28/12	2800mm wide x 1200mm deep x 1050/1057mm high.
AB26/12	2600mm wide x 1200mm deep x 1050/1057mm high.
AB24/12	2400mm wide x 1200mm deep x 1050/1057mm high.
AB22/12	2200mm wide x 1200mm deep x 1050/1057mm high.



### Alto High Bench With Castors.

- 25mm MFC, Nanotech and veneer top panels and 32mm solid oak top panels.
- Heavy duty 'A' frame legs with cross bracing frame.
- 75mm Grey rubber castor with brake.
- Alto Bench with MFC, Nanotech and veneer top panels are supplied 1050mm high with radiused corners.
- Alto Bench with solid oak top panels are supplied 1057mm high with 90° corners.

AB28/12/C	2800mm wide x 1200mm deep x 1050/1057mm high.
AB26/12/C	2600mm wide x 1200mm deep x 1050/1057mm high.
AB24/12/C	2400mm wide x 1200mm deep x 1050/1057mm high.
AB22/12/C	2200mm wide x 1200mm deep x 1050/1057mm high.



## Alto Low Bench.



### Alto Low Bench Without Castors.

- 25mm MFC, Nanotech and veneer top panels and 32mm solid oak top panels.
- Heavy duty 'A' frame legs.
- Alto Bench with MFC, Nanotech and veneer top panels are supplied 740mm high with radiused corners.
- Alto Bench with solid oak top panels are supplied 747mm high with 90° corners.

ABL28/12	2800mm wide x 1200mm deep x 740/747mm high.
ABL26/12	2600mm wide x 1200mm deep x 740/747mm high.
ABL24/12	2400mm wide x 1200mm deep x 740/747mm high.
ABL22/12	2200mm wide x 1200mm deep x 740/747mm high.
ABL20/12	2000mm wide x 1200mm deep x 740/747mm high.
ABL18/12	1800mm wide x 1200mm deep x 740/747mm high.
ABL16/12	1600mm wide x 1200mm deep x 740/747mm high.
ABL14/12	1400mm wide x 1200mm deep x 740/747mm high.
ABL12/12	1200mm wide x 1200mm deep x 740/747mm high.

ABL28/10	2800mm wide x 1000mm deep x 740/747mm high.
ABL26/10	2600mm wide x 1000mm deep x 740/747mm high.
ABL24/10	2400mm wide x 1000mm deep x 740/747mm high.
ABL22/10	2200mm wide x 1000mm deep x 740/747mm high.
ABL20/10	2000mm wide x 1000mm deep x 740/747mm high.
ABL18/10	1800mm wide x 1000mm deep x 740/747mm high.
ABL16/10	1600mm wide x 1000mm deep x 740/747mm high.
ABL14/10	1400mm wide x 1000mm deep x 740/747mm high.
ABL12/10	1200mm wide x 1000mm deep x 740/747mm high.



### Alto Low Bench With Castors.

- 25mm MFC, Nanotech and veneer top panels and 32mm solid oak top panels.
- Heavy duty 'A' frame legs.
- 75mm Grey rubber castor with brake.
- Alto Bench with MFC, Nanotech and veneer top panels are supplied 740mm high with radiused corners.
- Alto Bench with solid oak top panels are supplied 747mm high with 90° corners.

ABL28/12/C	2800mm wide x 1200mm deep x 740/747mm high.
ABL26/12/C	2600mm wide x 1200mm deep x 740/747mm high.
ABL24/12/C	2400mm wide x 1200mm deep x 740/747mm high.
ABL22/12/C	2200mm wide x 1200mm deep x 740/747mm high.
ABL20/12/C	2000mm wide x 1200mm deep x 740/747mm high.
ABL18/12/C	1800mm wide x 1200mm deep x 740/747mm high.
ABL16/12/C	1600mm wide x 1200mm deep x 740/747mm high.
ABL14/12/C	1400mm wide x 1200mm deep x 740/747mm high.
ABL12/12/C	1200mm wide x 1200mm deep x 740/747mm high.

ABL28/10/C	2800mm wide x 1000mm deep x 740/747mm high.
ABL26/10/C	2600mm wide x 1000mm deep x 740/747mm high.
ABL24/10/C	2400mm wide x 1000mm deep x 740/747mm high.
ABL22/10/C	2200mm wide x 1000mm deep x 740/747mm high.
ABL20/10/C	2000mm wide x 1000mm deep x 740/747mm high.
ABL18/10/C	1800mm wide x 1000mm deep x 740/747mm high.
ABL16/10/C	1600mm wide x 1000mm deep x 740/747mm high.
ABL14/10/C	1400mm wide x 1000mm deep x 740/747mm high.
ABL12/10/C	1200mm wide x 1000mm deep x 740/747mm high.

## Bench Seating.



### Bench Seating.

- 'A' Frame legs.
- 25mm MFC, Nanotech and veneer seat panels and 32mm solid oak seat panels.
- Bench seating with MFC, Nanotech and veneer seat panels are supplied 465mm high with radiused corners.
- Bench seating with solid oak seat panels are supplied 472mm high with 90° Corners.

LBS19	1900mm wide x 330mm deep x 465/472mm high.
LBS17	1700mm wide x 330mm deep x 465/472mm high.
LBS15	1500mm wide x 330mm deep x 465/472mm high.
LBS13	1300mm wide x 330mm deep x 465/472mm high.



### Bench Seating with Full Length Seat Pad.

- 'A' Frame legs.
- 25mm MFC, Nanotech and veneer seat panels and 32mm solid oak seat panels.
- Bench seating with MFC, Nanotech and veneer seat panels are supplied 495mm high with radiused corners.
- Bench seating with solid oak seat panels are supplied 502mm high with 90° Corners.
- Group 1-7 fabric bands options.

LBS19/FSP	1900mm wide x 330mm deep x 495/502mm high.
LBS17/FSP	1700mm wide x 330mm deep x 495/502mm high.
LBS15/FSP	1500mm wide x 330mm deep x 495/502mm high.
LBS13/FSP	1300mm wide x 330mm deep x 495/502mm high.



### Bench Seating with Individual Seat Pads.

- 'A' Frame legs.
- 25mm MFC, Nanotech and veneer seat panels and 32mm solid oak seat panels.
- Bench seating with MFC, Nanotech and veneer seat panels are supplied 495mm high with radiused corners.
- Bench seating with solid oak seat panels are supplied 502mm high with 90° Corners.
- Group 1-7 fabric bands options.

LBS19/ISP	1900mm wide x 330mm deep x 495/502mm high.
LBS17/ISP	1700mm wide x 330mm deep x 495/502mm high.
LBS15/ISP	1500mm wide x 330mm deep x 495/502mm high.
LBS13/ISP	1300mm wide x 330mm deep x 495/502mm high.



## Alto Bench Accessories.



### Alto Bench Vertical Cable Riser.

- Single channel vertical cable riser.

ABCR	High Bench Cable Riser.
ABLRCR	Low Bench Cable Riser.

ABCR/C	High Bench with Castors Cable Riser.
ABLRCR/C	Low Bench with Castors Cable Riser.



### Alto Bench Horizontal Cable Tray.

- Single channel horizontal cable tray with cable access grommets.
- Tray can be positioned accordingly along cross rail mountings.

ABCT28	2000mm Wide x 100mm Deep x 110mm High (For AB 28 Bench).
ABCT26	1800mm Wide x 100mm Deep x 110mm High (For AB 26 Bench).
ABCT24	1600mm Wide x 100mm Deep x 110mm High (For AB 24 Bench).
ABCT22	1400mm Wide x 100mm Deep x 110mm High (For AB 22 Bench).
ABCT20	1200mm Wide x 100mm Deep x 110mm High (For AB 20 Bench).
ABCT18	1000mm Wide x 100mm Deep x 110mm High (For AB 18 Bench).
ABCT16	800mm Wide x 100mm Deep x 110mm High (For AB 16 Bench).
ABCT14	600mm Wide x 100mm Deep x 110mm High (For AB 14 Bench).
ABCT12	400mm Wide x 100mm Deep x 110mm High (For AB 12 Bench).



### Slinky Cable Riser.

- Extendable coil-effect cable riser with weighted base.
- Easy installation to the underside of the Alto Bench Cable Tray.

SCR/S	Silver.
SCR/B	Black.
SCR/W	White.



### Wieland 2 Gang Socket.

- Can be configured to comply with BS 6396.
- Manufactured to BS 5733 General requirements for electrical accessories.
- Utilises standard 3 pole Wieland GST connections.
- Plastic fire retardant body.
- Supplied pre-fitted with earth lead.
- 4 Gang socket box available.



### Wieland Mains Cable and Plug.

- Black cable and plug.
- 13 amp fused.
- Used in conjunction with Wieland 2 Gang Socket Box.

7M	7000mm.
5M	5000mm.
3M	3000mm.
2M	2000mm.



### Wieland Interconnection Cable.

- Black cable.
- Male to Female Connectors.
- Used in conjunction with Wieland 2 Gang Socket Box.

CL20	2000mm.
CL10	1000mm.
CL5	500mm.



# Alto Bench Worktop Power Accessories.



## Boardroom 2x Gang Power Module.

- 2x 3.15 amp individually fused sockets.
- BS6396 compliant.
- Fixing via 272w x 132d aperture.
- Requires a Wieland Mains Cable and Plug if connecting directly into a socket. Sold separately.
- Available in:



Black body with black trim.  
Silver body with grey trim.  
White body with grey trim.

PPM2 2x Power - 300w x 150d



## Boardroom 4x Gang Power Module.

- 4x 3.15 amp individually fused sockets.
- BS6396 compliant.
- Fixing via 430w x 132d aperture.
- Requires a Wieland Mains Cable and Plug if connecting directly into a socket. Sold separately.
- Requires a Wieland Interconnection Cable if connecting directly into a Wieland Socket Box. Sold separately.
- Available in:



Black body with black trim.  
Silver body with grey trim.  
White body with grey trim.

PPM4 4x Power - 460w x 150d



## Boardroom 2x Gang Power and 2x Data Module.

- 2x 3.15 amp individually fused sockets.
- 2x Cat5e data sockets, includes 3 metre data cable.
- BS6396 compliant.
- Fixing via 272w x 132d aperture.
- Requires a Wieland Mains Cable and Plug if connecting directly into a socket. Sold separately.
- Available in:



Black body with black trim.  
Silver body with grey trim.  
White body with grey trim.

PPMD2 2x Power, 2x Data - 300w x 150d



## Boardroom 4x Gang Power and 2x Data Module.

- 4x 3.15 amp individually fused sockets.
- 2x Cat5e data sockets, includes 3 metre data cable.
- BS6396 compliant.
- Fixing via 430w x 132d aperture.
- Requires a Wieland Mains Cable and Plug if connecting directly into a socket. Sold separately.
- Available in:



Black body with black trim.  
Silver body with grey trim.  
White body with grey trim.

PPMD4 4x Power, 2x Data - 460w x 150d



## Boardroom 2x Gang Power, 1x Data Module and 1x Media Module.

- 2x 3.15 amp individually fused sockets.
- 1x Cat5e data sockets, includes 3 metre data cable.
- 1x USB twin charger (type A+C).
- 1x VGA connector.
- 1x 3.5mm audio stereo connector.
- 1x HDMI 1.3 connector.
- Includes ratchet clips and earthing kit.
- BS6396 compliant.
- Fixing via 272w x 132d aperture.
- Requires a Wieland Mains Cable and Plug if connecting directly into a socket. Sold separately.
- Available in:



Black body with black trim.  
Silver body with grey trim.  
White body with grey trim.

PPMMD2 2x Power, 1x Data and 1x Media - 300w x 150d



## Boardroom 4x Gang Power, 1x Data Module and 1x Media Module.

- 4x 3.15 amp individually fused sockets.
- 1x Cat5e data sockets, includes 3 metre data cable.
- 1x USB twin charger (type A+C).
- 1x VGA connector.
- 1x 3.5mm audio stereo connector.
- 1x HDMI 1.3 connector.
- Includes ratchet clips and earthing kit.
- BS6396 compliant.
- Fixing via 430w x 132d aperture.
- Requires a Wieland Mains Cable and Plug if connecting directly into a socket. Sold separately.
- Available in:



Black body with black trim.  
Silver body with grey trim.  
White body with grey trim.

PPMMD2 2x Power, 1x Data and 1x Media - 460w x 150d



Black Body with Black Trim.



Silver Body with Grey Trim.



White Body with Grey Trim.

The unit can be closed when most connections (including transformer plugs) have been made, to retain a flat work surface



## Alto Bench Worktop Power Accessories.



### Conus 2x Gang Boardroom Power Module and 1x Optional Module.

- 2x 3.15 amp individually fused sockets.
- Available with 1x optional module.

- Option 1 - HDMI Module.
- Option 2 - VGA + 3.5mm Audio Connector and 3m Extension.
- Option 3 - USB Twin Charger (Type A+C).
- Option 4 - 2x Cat6A.
- Option 5 - Blank Module Plate.

- 200mm power and connection lead to a Wieland connector.
- Fixing via 230w x 138d aperture.
- Requires a Wieland Mains Cable and Plug if connecting directly into a socket. Sold separately.
- Option 3 Requires an additional Wieland Mains Cable and Plug if using Wieland Socket Box. Sold separately.

POW/CON/2P1D      2x Power, 1 Option Module - 255w x 151d



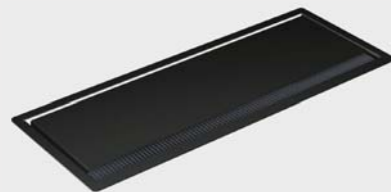
### Conus 4x Gang Boardroom Power Module and 2x Optional Modules.

- 4x 3.15 amp individually fused sockets.
- Available with 2x optional modules.

- Option 1 - HDMI Module.
- Option 2 - VGA + 3.5mm Audio Connector and 3m Extension.
- Option 3 - USB Twin Charger (Type A+C).
- Option 4 - 2x Cat6A.
- Option 5 - Blank Module Plate.

- 200mm power and connection lead to a Wieland connector.
- Fixing via 369w x 138d aperture.
- Requires a Wieland Mains Cable and Plug if connecting directly into a socket. Sold separately.
- Option 3 Requires an additional Wieland Mains Cable and Plug if using Wieland Socket Box. Sold separately.

POW/CON/4P2D      4x Power, 2x Option Module - 387w x 151d



Black Body with Black Inserts.



Silver Body with Black Inserts.



White Body with Black Inserts.



2x Gang Power Module and 1x Optional Module.



4x Gang Power Module and 2x Optional Modules.



Option 1:      **HDMI Module.**  
Female facing connection, male connection at rear.



Option 2:      **VGA + 3.5mm Audio Module.**  
Complete with 3m VGA and 3.5mm combined audio extension.



Option 3:      **USB-A 18W and USB-C 22W Charger Module.**  
Module complete with Wieland connector.  
• Requires a Wieland Mains Cable and Plug if connecting directly into a socket. Sold separately.



Option 4:      **2x Cat6A Data Connector Module.**  
Cat6A female connection at front and rear. Cables simply fit in the rear of module.



Option 5:      **Blank Module Plate.**  
Future modules can be retro-fitted.

# Alto Bench Worktop Power Accessories.



## Kaspa Power and Media Module.

- 1x or 2x 3.15 amp individually fused sockets.
- 1x USB twin charger (type A+A).
- Integral colour coded fuse clips.
- 200mm power and connection lead to a Wieland connector.
- Fixing via 135w x 53d (1 gang) or 189w x 53d (2 gang) aperture.
- Requires a Wieland Mains Cable and Plug if connecting directly into a socket. Sold separately.
- Available in:



Black casing with black inserts.  
 Silver casing with black inserts.  
 White casing with black inserts.

POW/KAS/1PIT      1x Power, 1x USB Twin Charger - 151w x 70d

POW/KAS/2PIT      2x Power, 1x USB Twin Charger - 204w x 70d



Black Body with Black Inserts.



Silver Body with Black Inserts.



White Body with Black Inserts.



## Prime Power and Media Module With Cover.

- 2x 3.15 amp individually fused sockets.
- 1x USB twin charger (type A+A).
- 200mm power and connection lead to a Wieland connector.
- Fixing via 225w x 60d aperture.
- Casing provided to discreetly protect cables and sockets.
- Requires a Wieland Mains Cable and Plug if connecting directly into a socket. Sold separately.
- Available in:



Black surround with black inserts.  
 Silver surround with black inserts.  
 White surround with black inserts.

POW/PRI/2PIT/C      2x Power, 1x USB Twin Charger - With Cover - 257w x 88d



Black Body with Black Inserts.



Silver Body with Black Inserts.



White Body with Black Inserts.



## Prime Power and Media Module.

- 2x 3.15 amp individually fused sockets.
- 1x USB twin charger (type A+A).
- 200mm power and connection lead to a Wieland connector.
- Fixing via 225w x 60d aperture.
- Requires a Wieland Mains Cable and Plug if connecting directly into a socket. Sold separately.
- Available in:



Black surround with black inserts.  
 Silver surround with black inserts.  
 White surround with black inserts.

POW/PRI/2PIT      2x Power, 1x USB Twin Charger - Without Cover - 241w x 73d



Black Body with Black Inserts.



Silver Body with Black Inserts.



White Body with Black Inserts.



Prime Power and Media Module With Cover.



Prime Power and Media Module.

# Alto Bench Worktop Power Accessories.



## Escalate Power and Media Module.

- 1x 3.15 amp individually fused socket.
- 1x USB twin charger (type A+A).
- 500mm power and connection lead to Wieland connector.
- Fixing via 80dia x porthole aperture.
- Requires a Wieland Mains Cable and Plug if connecting directly into a socket. Sold separately.



POW/ESC/1P1T/S      1x Power, 1x USB Twin Charger - 90dia x 230h



## Inca Power and Media Module.

- 2x 3.15 amp individually fused sockets.
- 2x USB twin charger (type A+A).
- Certified to comply to BS5733 and BS6396.
- Fixing via 80dia x porthole aperture.
- Requires a Wieland Mains Cable and Plug if connecting directly into a socket. Sold separately.
- Available in:

Black.  
Grey.  
White.



IPM      2x Power, 2x USB Twin Charger - 140w x 140d x 72h

## Peak Power and Media Module.

- 4x or 6x 3.15 amp individually fused sockets.
- 2x USB twin charger (type A+C).
- Integral colour coded fuse clips.
- Hardwired 800mm lead to Wieland male connector.
- Includes 4x screw clamps.
- Fixing via 192w x 132d aperture for 4 gang - 272w x 132d aperture for 6 gang.
- Requires a Wieland Mains Cable and Plug if connecting directly into a socket. Sold separately.
- Available in:



Black surround with black inserts.  
Silver surround with black inserts.  
White surround with grey inserts.

PEAPM60      4x Power, 2x USB Twin Chargers - 220w x 155d

PEAPM80      6x Power, 2x USB Twin Chargers - 300w x 155d



Black Surround with Black Inserts.



Silver Surround with Black Inserts.



White Surround with Grey Inserts.



Black.



Grey.



White.

## Pluto Power and Media Module.

- 3.15 amp individually fused sockets.
- Optional USB twin charger (type A+C).
- Certified to comply to BS5733.
- Fixing via 80dia x porthole aperture.
- Requires a Wieland Mains Cable and Plug if connecting directly into a socket. Sold separately.
- Available in:

Matt black with grey inserts.  
Matt grey with black inserts.  
Glossy white with grey inserts.



PLU/3P      3x Power - 140dia x 73h

PLU/2P/1USB      2x Power, 1x USB Twin Charger - 140dia x 73h



Matt Black with Grey Inserts.



Matt Grey with Black Inserts.



Glossy White with Grey Inserts.



# Alto Bench Worktop Power Accessories.



## Wireless Charging Module.

- Charge smartphones and tablets wirelessly.
- Charging unit complete with USB power plug.
- Fixing via 80dia x porthole aperture.
- Wireless Charging Receiver required when device does not support wireless charging. Sold separately.
- Available in:

- Black.
- Black with aluminium trim.
- Black glass.
- White.
- White with aluminium trim.
- White glass.

WCU

Charging Unit - 85dia



Black



Black with Aluminium Trim



Black Glass



White



White with Aluminium Trim



White Glass



## Dual Pro Wireless Charging Unit.

- Charge smartphones and tablets wirelessly.
- Lid cover slides to reveal 3x USB charging sockets (type A+A+C).
- 65W laptop charging without a traditional 'brick' power cord.
- Charging unit complete with USB power plug.
- Fixing via 80dia x porthole aperture.
- Wireless Charging Receiver required when device does not support wireless charging.
- Available in:

- Black Glass with black base.
- Black Glass with silver base.
- White Glass with black base.
- White Glass with silver base.

WCU/DP

Dual Pro Charging Unit - 203w x 93d x 8h



Black Glass with Black Base



Black Glass with Silver Base



White Glass with Black Base



White Glass with Silver Base



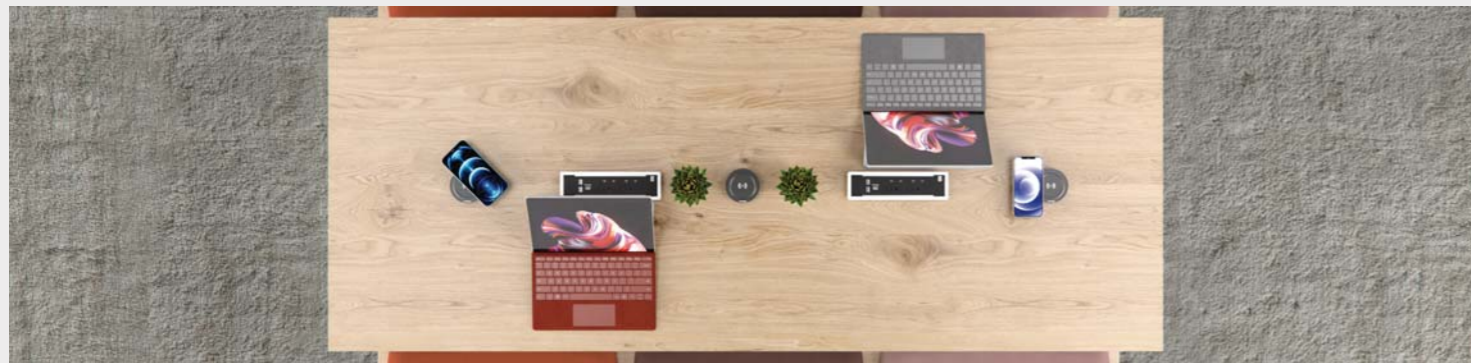
## Wireless Charging Receiver.

- Charge smartphones and tablets wirelessly.
- Wireless Charging Unit required to support wireless charging.
- Lightning output: DC 5V, 1A
- Micro USB output: DC 5V, 1A
- USB Type C output: DC 5V, 1A
- Available in:

- Silver with black connector.

WCU/WCR

Wireless Charging Receiver - 60dia x 12.7h



# Alto Bench Worktop Power Accessories Compatibility.

- Kaspa Power and Media Module.
- Prime Power and Media Module.
- Prime Power and Media Module with Cover.
- Boardroom 2x Gang Power Module.
- Boardroom 4x Gang Power Module.
- Boardroom 2x Gang Power and 2x Data Module.
- Boardroom 4x Gang Power and 2x Data Module.
- Boardroom 2x Gang Power 1x Data and 1x Media Module.
- Boardroom 4x Gang Power 1 Data and 1x Media Module.
- Conus 2x Gang Boardroom Power and 1x Optional Module.
- Conus 4x Gang Boardroom Power and 2x Optional Module.
- Escalate Power and Media Module.
- Peak 6 Gang Power and Media Module.
- Peak 8 Gang Power and Media Module.
- Inca Power and Media Module.
- Pluto Power and Media Module.
- Wireless Charging Module.
- Dual Pro Wireless Charging Module.

## Alto High Bench Without Castors.

- AB28/12 2800mm w x 1200mm d x 1050/1057mm h.
- AB26/12 2600mm w x 1200mm d x 1050/1057mm h.
- AB24/12 2400mm w x 1200mm d x 1050/1057mm h.
- AB22/12 2200mm w x 1200mm d x 1050/1057mm h.

## Alto High Bench With Castors.

- AB28/12/C 2800mm w x 1200mm d x 1050/1057mm h.
- AB26/12/C 2600mm w x 1200mm d x 1050/1057mm h.
- AB24/12/C 2400mm w x 1200mm d x 1050/1057mm h.
- AB22/12/C 2200mm w x 1200mm d x 1050/1057mm h.



## Alto Low Bench Without Castors.

- ABL28/12 2800mm w x 1200mm d x 740/747mm h.
- ABL26/12 2600mm w x 1200mm d x 740/747mm h.
- ABL24/12 2400mm w x 1200mm d x 740/747mm h.
- ABL22/12 2200mm w x 1200mm d x 740/747mm h.
- ABL20/12 2000mm w x 1200mm d x 740/747mm h.
- ABL18/12 1800mm w x 1200mm d x 740/747mm h.
- ABL16/12 1600mm w x 1200mm d x 740/747mm h.
- ABL14/12 1400mm w x 1200mm d x 740/747mm h.
- ABL12/12 1200mm w x 1200mm d x 740/747mm h.

- ABL28/10 2800mm w x 1000mm d x 740/747mm h.
- ABL26/10 2600mm w x 1000mm d x 740/747mm h.
- ABL24/10 2400mm w x 1000mm d x 740/747mm h.
- ABL22/10 2200mm w x 1000mm d x 740/747mm h.
- ABL20/10 2000mm w x 1000mm d x 740/747mm h.
- ABL18/10 1800mm w x 1000mm d x 740/747mm h.
- ABL16/10 1600mm w x 1000mm d x 740/747mm h.
- ABL14/10 1400mm w x 1000mm d x 740/747mm h.
- ABL12/10 1200mm w x 1000mm d x 740/747mm h.

## Alto Low Bench With Castors.

- ABL28/12/C 2800mm w x 1200mm d x 740/747mm h.
- ABL26/12/C 2600mm w x 1200mm d x 740/747mm h.
- ABL24/12/C 2400mm w x 1200mm d x 740/747mm h.
- ABL22/12/C 2200mm w x 1200mm d x 740/747mm h.
- ABL20/12/C 2000mm w x 1200mm d x 740/747mm h.
- ABL18/12/C 1800mm w x 1200mm d x 740/747mm h.
- ABL16/12/C 1600mm w x 1200mm d x 740/747mm h.
- ABL14/12/C 1400mm w x 1200mm d x 740/747mm h.
- ABL12/12/C 1200mm w x 1200mm d x 740/747mm h.

- ABL28/10/C 2800mm w x 1000mm d x 740/747mm h.
- ABL26/10/C 2600mm w x 1000mm d x 740/747mm h.
- ABL24/10/C 2400mm w x 1000mm d x 740/747mm h.
- ABL22/10/C 2200mm w x 1000mm d x 740/747mm h.
- ABL20/10/C 2000mm w x 1000mm d x 740/747mm h.
- ABL18/10/C 1800mm w x 1000mm d x 740/747mm h.
- ABL16/10/C 1600mm w x 1000mm d x 740/747mm h.
- ABL14/10/C 1400mm w x 1000mm d x 740/747mm h.
- ABL12/10/C 1200mm w x 1000mm d x 740/747mm h.

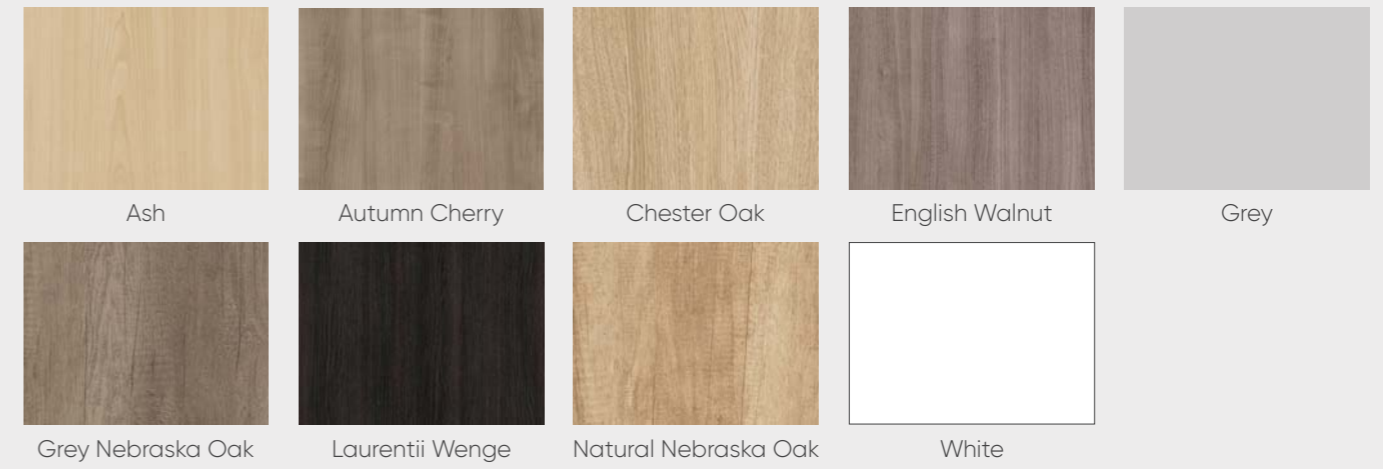
ALL POWER AND DATA MODULES WILL BE POSITIONED CENTRALLY IN THE TOP PANEL

Top Panel Options.

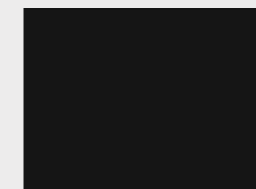


MFC, Nanotech, Veneer and Solid Wood Finishes.

Dual Board MFC Finishes.

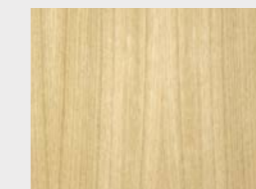


Nanotech Finish.

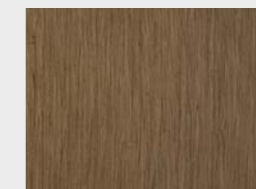


Black Matt MDF

Veneer Finishes.



Oak



Walnut

Solid Wood Finish.

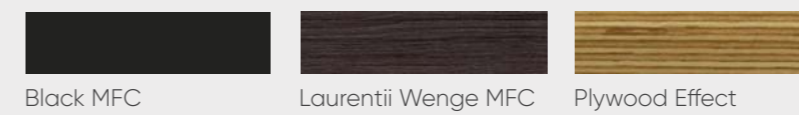


Solid Oak

Contrasting Edging Options.

The finishes below are contrasting edging options for 25mm White Dual Board MFC and Black Matt MDF only.

White Dual Board MFC - Black MFC, Laurentii Wenge MFC & Plywood Effect.  
 Black Matt MDF - Laurentii Wenge MFC & Plywood Effect.



Our production and assembly line.

## Frame Finish Options.

Frame metalwork colours and finishes are available as follows:

Standard Colours: Silver RAL 9006, Black Graphite RAL 9004 and White RAL 9003.

Premium Colours: Praline, Olive Green, Atlantic Blue, Sapphire Blue, Mustard Yellow, Terracotta, Conker Brown, Raw Metalwork and Chrome Effect. (Contact sales for pricing).



Silver (RAL 9006)



Black Graphite (RAL 9004)



White (RAL 9003)



Praline



Olive Green



Atlantic Blue



Sapphire Blue



Mustard Yellow



Terracotta



Conker Brown



Raw Metalwork

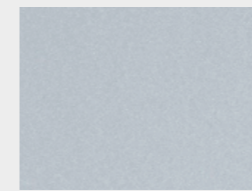


Chrome Effect

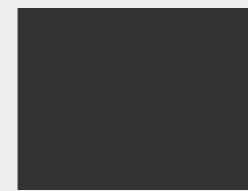
## Metalwork Finishes.

Standard Metal Finishes.

The 3 finishes below are our standard metal finishes.



Silver  
RAL 9006



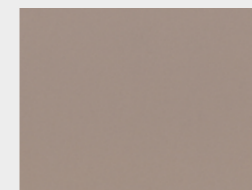
Black Graphite  
RAL 9004



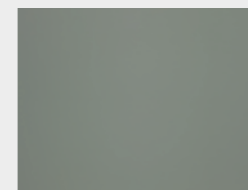
White  
RAL 9003

Premium Metal Finishes.

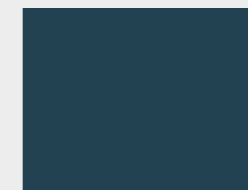
The 9 finishes below are non-standard metalwork finishes. Subject to a 2 week lead time.



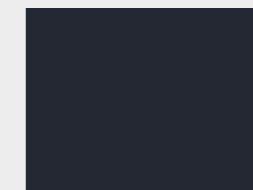
Praline



Olive Green



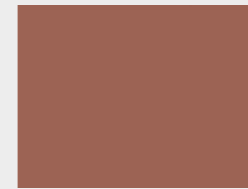
Atlantic Blue



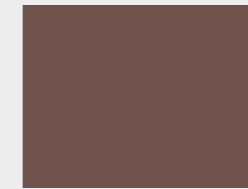
Sapphire Blue



Mustard Yellow



Terracotta



Conker Brown



Raw Metalwork



Chrome Effect



Our powder-coating line enables components to be colour changed swiftly, maintaining our prompt lead times on products. This includes a three-stage cleaning process, conserving water by recirculating the degreasing chemicals.



Dual Board – Superior Melamine Board (MFC).



Elite are an exclusive user of the superior quality melamine board called 'Dual Board'.

The board consists of a chipboard core surfaced on both sides by a sheet of MDF. The newly developed 'Dual Board' material offers significant advantages including structural, machining and component strength. The material offers Elite's client increased quality and added value. It offers greater impact resistance combining the durability of MDF and Chipboard into a single board.

The MDF faces of 'Dual Board' eliminates any irregularities associated with raw chipboard and translates this into a smooth, even surface. For our highly complex production operation this level of board performance is essential and translates directly into the high standards of quality offered to Elite clients.

KEY BENEFITS



Perfect cutting during manufacture.



Thanks to its high physical-mechanical performance, Dual Board provides an excellent response in the most demanding load situations.



High resistance to impact. This prevents marks, deformities or surface damage.



The properties of the exterior high-density fibre layer reduce surface absorption.



BS EN 13722:2004  
Gloss/reflective level testing on furniture surfaces.



We are proud to be FSC® certified

The Forest Stewardship Council® (FSC®)

FSC® is a global, not-for-profit organization dedicated to the promotion of responsible forest management worldwide.

FSC® defines standards based on agreed principles for responsible forest stewardship that are supported by environmental, social, and economic stakeholders.

FSC® helps take care of forests for future generations.

FSC® helps take care of forests and the people and wildlife that call them home.

By choosing these products, you help take care of the world's forests. Learn more: [www.fsc.org](http://www.fsc.org).



The wood-based panels industry in Europe has established a common classification system for formaldehyde content and emissions, in their own products and standardised testing methods.

The European Standard EN 13986 for E1 classification provides that formaldehyde emissions must not exceed 0.124 mg/m<sup>3</sup>.

Elite Dual Board MFC complies with the Class E1 requirements, tested in accordance with EN 120 defined in European Standard EN 312:2003.



## Our Plastic Awareness Policy

We adhere to our Circular Economy business model that aims to deliver 100% recyclability.

The use of recycled plastic in place of virgin resin typically results in reduced energy consumption, lower cost, and reduced environmental impact.

Our Alto Bench product permits all plastic components to be recycled through curbside programs. The following illustrates what type of plastic is used and its recyclable properties.

WHAT WE USE	RESIN TYPE	RESIN ID CODE
<b>Alto Bench Construction:</b>		
MFC Panel Edging.	Acrylonitrile Butadiene Styrene.	(ABS) 9
Adjustable Levelling Feet.	Polypropylene.	(PP) 5
Cable Tray Access Grommets.	Thermoplastic Elastomers.	(TPE) 7
<b>Packaging Materials:</b>		
Packaging Cling Film.	Low Density Polythene.	(LDPE) 4



### Low Density Polythene (LDPE)

LDPE is not often recycled through curbside programs, but some communities will accept it.



### Polypropylene (PP)

Can be recycled through some curbside programs.



### Acrylonitrile-Butadiene-Styrene (ABS)

ABS is recycled by first shredding used plastics to produce shredded plastics. After this step, metals and undesirable plastics are separated from the shredded plastics to produce separated plastics.



### Thermoplastic Elastomers (TPE) / Thermoplastic Vulcanizate Elastomers (TPV)

Thermoplastic Elastomers can be recycled nearly up to 100%. Due to uncured molecular chains, it is possible to melt down the thermoplastic elastomers again and again. This characteristic turns the Thermoplastic Elastomers back into its manufacturing process.



### RESIN IDENTIFICATION CODE

The ASTM International Resin Identification Coding System, often abbreviated as the RIC, is a set of symbols appearing on plastic products that identify the plastic resin out of which the product is made.

The Society of the Plastics Industry introduced the Resin Identification Code (RIC) system in 1988 as a growing number of communities were implementing recycling programs.

In order to address the concerns of recyclers the RIC system was designed to make it easier for workers in materials recovery and recycling facilities to sort and separate items according to their resin type.

Plastics must be recycled separately, with like materials, in order to preserve the material's value and enable its reuse in other products after being recycled.

WE DO NOT USE ANY PRODUCT CONTAINING MICROBEADS IN OUR COMPANY, WHETHER FOR CLEANING OR MANUFACTURING PURPOSES.

Microbeads are tiny pieces of plastic that are added to everyday products. They are most frequently made of polyethylene but can be of other petrochemical plastics such as polypropylene and polystyrene.

Microbeads are tiny, and may seem harmless, but 100,000 microbeads are washed down the sink with a single application of some products, ending up in the sea and the food chain.



## CMHR Foam: Fire Retardant

Combustion Modified High Resilience foams are used in the manufacturing of Alto Bench based seating products. The seat pad uses the strictest fire code standards.

Foams are tested according to the methods set out in the Furniture and Furnishings Fire Safety Regulations 1988. BS5852 Standards For Commercial Use.

Our foams pass the Crib 5 UK fire test rating (also known as Ignition Source 5).



## CMHR Foam: CertiPUR® Certified

The Combustion Modified High Resilience foam used in the manufacturing of the Bench seat pads is CertiPUR® certified. This is an environmental accreditation awarded by Europur. It specifies substances that may not be used in the production of polyurethane foams and sets stringent maximum limits for some components.

Foams that conform to CertiPUR® are notably certified to be made without:  
 Heavy metals, e.g. mercury, lead or cadmium  
 Dyes that are carcinogenic or allergenic as described by EU legislation  
 Phthalate plasticisers

They are also certified for low levels of VOC (volatile organic compound) emissions.

## Accreditations and Achievements

### Company Accreditations

BS EN ISO 9001:2015  
Quality Management Systems.

BS EN ISO 14001:2015  
Environmental Management Systems.

BS OHSAS 45001:2018  
Occupational Health & Safety Management.

BS EN ISO 50001:2011  
Energy Management Systems.

FISP  
Furniture Industry Sustainability Programme.  
As part of our Environmental Policy.

FSC®  
Forest Stewardship Council®.  
Chain of Custody Certification.

FIRA  
Furniture Industry Research Association.  
Affiliated Member.

CIUK  
Commercial Interiors UK (formerly the BCFA).  
Affiliated Member.

Valpak  
The Producer Responsibility Obligations Regulations.  
(Packaging Waste).

FORS (Bronze Award)  
The Fleet Operator Recognition Scheme.

RHA  
Road Haulage Association.  
Affiliated Member.

### Furniture Accreditations

BS EN 527-1:2011  
Office furniture desking dimensions.

BS EN 527-2:2002  
Office furniture desking mechanical safety requirements.

BS EN 527-3:2003  
Office furniture desking strength & stability.

BS EN ISO 9241-5:1999  
Ergonomics of VDU/TFT screen usage within offices.

BS 4875-7:2006  
Strength & stability of shelving.  
Test level 4 (shelves only).

BS 6396:2008  
Office furniture desking electrical systems.

BS EN 13722:2004  
Gloss/reflective level testing on furniture surfaces.

BS EN 14073-2:2004  
Strength & rigidity testing of storage furniture part 2.

BS EN 14073-3:2004  
Strength & rigidity testing of storage furniture part 3.

BS EN 14074:2004  
Endurance & stability testing of storage furniture.

BS EN 14322:2017  
Definition, requirements & classification of wood based panels.  
(Elite Dual Board).

BS EN 15372:2008 level 2  
Standard and folding tables structurally suitable and stable for general contract use.

UNE-EN 14323:2004  
Dual Board resistance to scratching, cracking and staining.

### Dividing Screen Accreditations

BS 476-7:1987  
Flammability test for Screens (Class 2).

BS EN 1023-1:1997  
Office furniture screens, dimensions.

BS EN 1023-2:2000  
Office furniture screens, mechanical safety requirements.

BS EN 1023-3:2000  
Office furniture screens, test methods.

BS EN 9241-5  
Gloss Level - surface reflectance (Screens).

EN 13501-1:2007+A1:2009  
Fire classification of construction products and building elements. Part 1.

BS EN 13823:2010+A1:2014  
Reaction to fire tests for building products. Building products excluding floorings exposed to the thermal attack by a single burning item.

BS EN ISO 11925-2:2010  
Reaction to fire tests. Ignitability of products subjected to direct impingement of flame. Single-flame source test.

BS EN ISO 1182:2002  
Reaction to fire tests for building products. Non-combustibility test.

BS EN ISO 1716:2018  
Reaction to fire tests for products. Determination of the gross heat of combustion (calorific value).

BS EN 12667:2001  
Thermal performance of building materials and products. Determination of thermal resistance by means of guarded hot plate and heat flow meter methods. Products of high and medium thermal resistance.

### Seating Accreditations

BS EN 1022:2015 & 2020  
Seating, determination of stability.

BS EN 1335-1 + BS EN 1335-2 + BS EN 1335-3  
Office work chairs safety test methods.

EN 1728:2012 + AC:2013  
Seat & Back Static Load Test & Durability.  
Front & Back Fatigue Test & Impact Test.

BS EN 5852 Part 2: 1982  
Ignition source 5 (Crib 5) Fire Retardancy.  
CertiPUR certified foam.

BS EN 5459-2: 2000+A2:2008  
Office seating for use by person weighing up to 150kg and for use upto 24 hours a day.

BS EN 13761:2002  
Visitor Chairs - Dimensions & Safety Requirements.

BS EN 15373:2007 level 2  
Seating strength, durability and safety.  
Requirements for non-domestic seating.

BS EN 16139:2015  
4 legged & cantilever seating, strength, durability and safety requirements.

EN 1728/2000 & 2015  
Domestic furniture. Seating. Test methods for the determination of strength and durability.

BS EN 10025:1993  
Specification for hot rolled products of non-alloy structural steels and their technical delivery conditions.  
Applicable to all chrome plated parts.

ANSI/BIFMA X5.1-2002  
International testing certificate for office chairs.  
Sections:08,11,13,14,16 and 18.

ANSI/BIFMA X5.1-2011  
International testing certificate for office chairs.  
Sections:05,11,3,13,14 and 15.

TUV Eco-Circle 2008  
Tested for recyclable content, harmful substances, energy saving & ergonomic design.

NEOCON  
Silver Award Winner 2013 Chicago, USA.

